

# POWER GROUP COMPANY INTRODUCTION

- POWER ELEKTRONİK
- POWER ENGINEERING
- POWER SOLAR



December 2022



# POWER SOLUTIONS



3PH UPS



1PH UPS



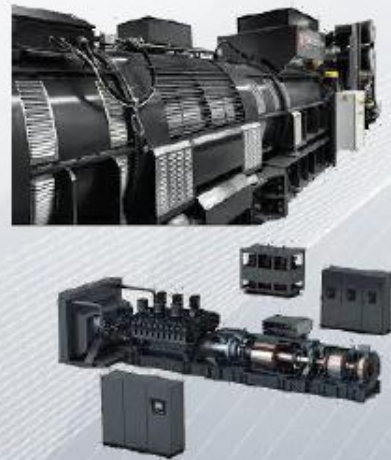
RECTIFIERS & BATTERY CHARGERS



BATTERIES



VOLTAGE STABILIZERS



DYNAMIC UPS



AC/DC EV CHARGING STATIONS



SOLAR ENERGY SYSTEMS

# POWER GROUP COMPANIES

---

Power Elektronik which is one of our group of companies as established in 1999 and has been in production since. The company has been making domestic and international sales.

Power Solar is a subcompany of Power Elektronik and was established in 2007 in order to provide solutions for solar energy systems. Since 2012 continuing as an incorporated company.

Power Engineering company is also a subcompany of Power Elektronik and was established in 2015 in order to provide engineering solutions for both Power Elektronik and Power Solar.

# POWER GROUP COMPANIES

---

We are manufacturer of standard AC-DC UPS Systems, battery chargers, rectifiers, voltage stabilisers and integrated solution partner for complicated industrial power systems.

As Power Elektronik we design products in our own R&D department. We are selling our products and solutions to more than 50 countries. Our vital sectors are power plants, hospitals, factories, petroleum pipelines, gas pipelines, airports, railways etc.

From the very first day we began 24 years ago to today,with the companies we cooperate with we are working towards economical profits for both parties to enrich human life.

# POWER GROUP COMPANIES

## POWER ELEKTRONİK

**Power Elektronik** team consists of 70 employees as below

- 12 Engineer
- 25 Manufacturing technician
- 10 Service technician
- 19 Sales and marketing
- 2 Quality expert
- 2 Financial expert



# POWER ENGINEERING

---

We are a leading innovative company in our field.

As Power Engineering ,we handle project design, contact work, consultancy services, maintenance and operation, Solar Power Plant projects and installation.

In renewable Energy projects and consultancy services, we pay special attention to sustainability and efficiency in all projects.

# POWER SOLAR ENERGY

<b>Counseling</b> -Investment Analysis -Field development Feasibility -Technical Evaluation -License Application	<b>Consultancy</b> -Process Management -Engineering Audit -Purchase Audit -Integration Audit	<b>Lending and Finance</b> -Budget Analysis -Investment-Finance - Analysis -Loan Financing Insurance	<b>Project &amp; Engineering</b> -System Designing -Engineering -Project Simulation and Shading Analysis
<b>Purchase and Procurement</b> -Material Selection -Procurement tenders -Purchase -Quality Control -Logistics	<b>Application and Integration</b> -Project Management -Mounting -System Integration -Test and commissioning	<b>Management</b> -Technical Management -Commercial Management -Monitoring Control	<b>Maintenance</b> -Maintenance and Repair -Technical Intervention Security



# POWER ELEKTRONIK PRODUCT RANGE



# 3-PH/3-PH ONLINE UPS PRODUCTS

**PWR33 GOLD DS UPS 10-300 kVA**

GBT Doğrultucu

3 faz giriş / 3 faz çıkış 3 Phase Input / 3 Phase Output

**POWER ELEKTRONİK**  
Endüstriyel Güç Sistemleri  
Industrial Power Solutions

**TEYDEB**



# 1-PH ONLINE UPS PRODUCTS

## PWR 11, PWR11 GOLD, PWR11-OL Series

1 Phase Input/1 Phase Output

### Basic Features;

- High efficiency on-line power protection
- Efficiency up to 94 %
- Static by-pass feature
- Maintenance by-pass feature
- LCD front panel Event memory (1.000)
- Remote monitoring
- RS 232 and the dry contact outputs
- Manufacturing with the quality assurance systems TSEK, CE and ISO 9001



PWR11



PWR11 GOLD



# 3-PH /1-PH UPS PRODUCTS

**PWR31, PWR 31 GOLD, PWR 31-OL Series**

3 Phase Input/1 Phase Output

## Basic Features;

- High input power factor 0.99
- Low input current harmonic distortion <5%
- Efficiency up to 94%
- Parallel operating feature
- Emergency shut off switch connection
- Static by-pass feature
- Maintenance by-pass feature
- LCD front panel
- Event memory ( 164)
- Remote monitoring
- SNMP Compatible communication
- RS232 and the dry contact outputs



**PWR31**

**PWR31 GOLD**



**PWR31-OL**

# 1-PH DC BATTERY CHARGERS

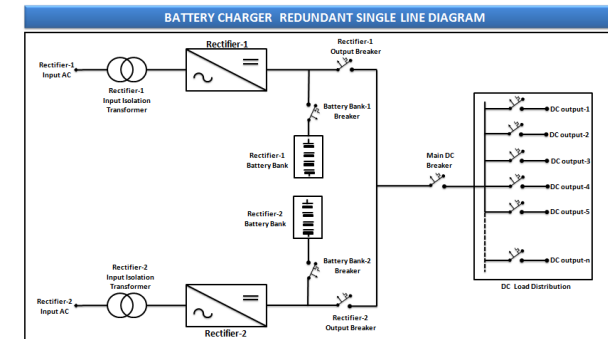
## DC Charger/Industrial Rectifier Manufacturing

- Industrial design design
  - Critical DC Load back up
  - Battery charge functioning
  - SCADA output
  - Protection functioning
  - High current capacity
  - Thyristor-transformer & IGBT
- 128x64 graphic LCD
  - The output voltage has low and high voltage protection and can be selected from the front panel.



# 3-PH INDUSTRIAL BATTERY CHARGERS

- The input voltage, input current, output voltage, output current can be read from the front panel.
- Output short circuit and reverse battery protection is available.
- DSP controlled.
- Optionally, the network may be interrupted even inform the user by displaying the battery level continues to work on the front panel.
- All parts of the cabin is made from 2mm mild steel sheet it is powder coated.
- ISO9001 certified manufacturing quality, ISO14001 certificate , CE conformity



# SERVO-STATIC TYPE VOLTAGE STABILIZERS

## POWER SERVO OR STATIC VOLTAGE STABILIZERS-1-6000 KVA

### General Features

- Advanced Technology 70-400 V/s Regulation Speed
- High Performance via RISC Microprocessor Control
- High Efficiency Up To 98%
- Wide Power Options Wide Input Voltage Rang
- Independent Control Panel for Each Phase
- True RMS Measurement, Feedback
- Selectable Output Max/Min Voltage
- Control Best in Class with



# STATIC VOLTAGE-FREQUENCY CONVERTERS

60-400Hz, 10-1500kVA

---

- Designed in online system and it feeds the loads it is connected by the stable frequency and voltage produced by itself.
- Together with the galvanic isolation transformer it provides a more reliable and noise free clean energy.



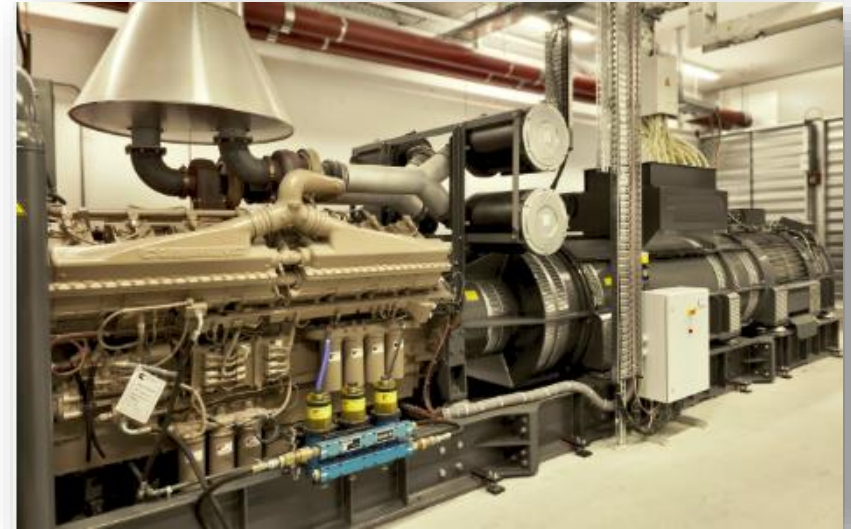


# HITZINGER DYNAMIC UPS AND CONVERTERS

## Basic Features

- Rating: up to 2500 kVA
- Voltage: up to 11 kV
- Dual output units
- MTBF value: > 1M hours
- Availability : > 99,9999 %
- Low MTTR value
- Low maintenance costs
- High choke quality
- High overload capacity
- Efficiency up to 96 %
- +/- 10 % Input Voltage
- Electromagnetic clutch
- 0,99 Input Power Factor
- Optimum mains failure supervision
- In house developed control system
- Brushless design, no slip rings
- Reduced plant room footprint

## Regulation



# AC Araç Şarj Tanıtımı

- Elektrikli Araç Şarj İstasyonu (EVSE – Electric Vehicle Supply Equipment)
- Neden EVSE?
- Hedef: Tam elektrikli ve Plug-in Hibrid araçlar
- Halka açık - Ev tipi şarj istasyonu
- Temel özellikler: Tek/Üç Faz AC / 22kw
- Örnek şarj süresi ve mesafe:
  - Renault ZOE (41kWh)
  - %75 şarj 45 dakika
  - %100 şarj 1.5 saat ~ 400km



# EV CHARGER SOLUTIONS

HAVE TIME TO CHARGE

2.3kw - 22 KW AC CHARGER

AC



DON'T HAVE TIME TO CHARGE

20-300 KW DC MODULAR CHARGER

DC



# DC/AC Car Charger introduction

- 60-300 kW Capacity (Parallelable power increase)
- 2 xCCS2 DC Outputs,
- 1 x 22kW AC Output
- Communication and information sharing with the server
- Adjustable DC Output Voltage 150
- 1000VDC max. 120A
- AC Output Voltage 400VAC, 32A
- Modular Design
- 1 or 3 Phase AC



## Advantages of Power Electronic Vehicle Charging Systems

- Price advantage
- Domestic design & production
- Flexibility and modularity
- Customizable
- Ease of installation
- Production infrastructure
- Technical support
- Security infrastructure
- Smart charging

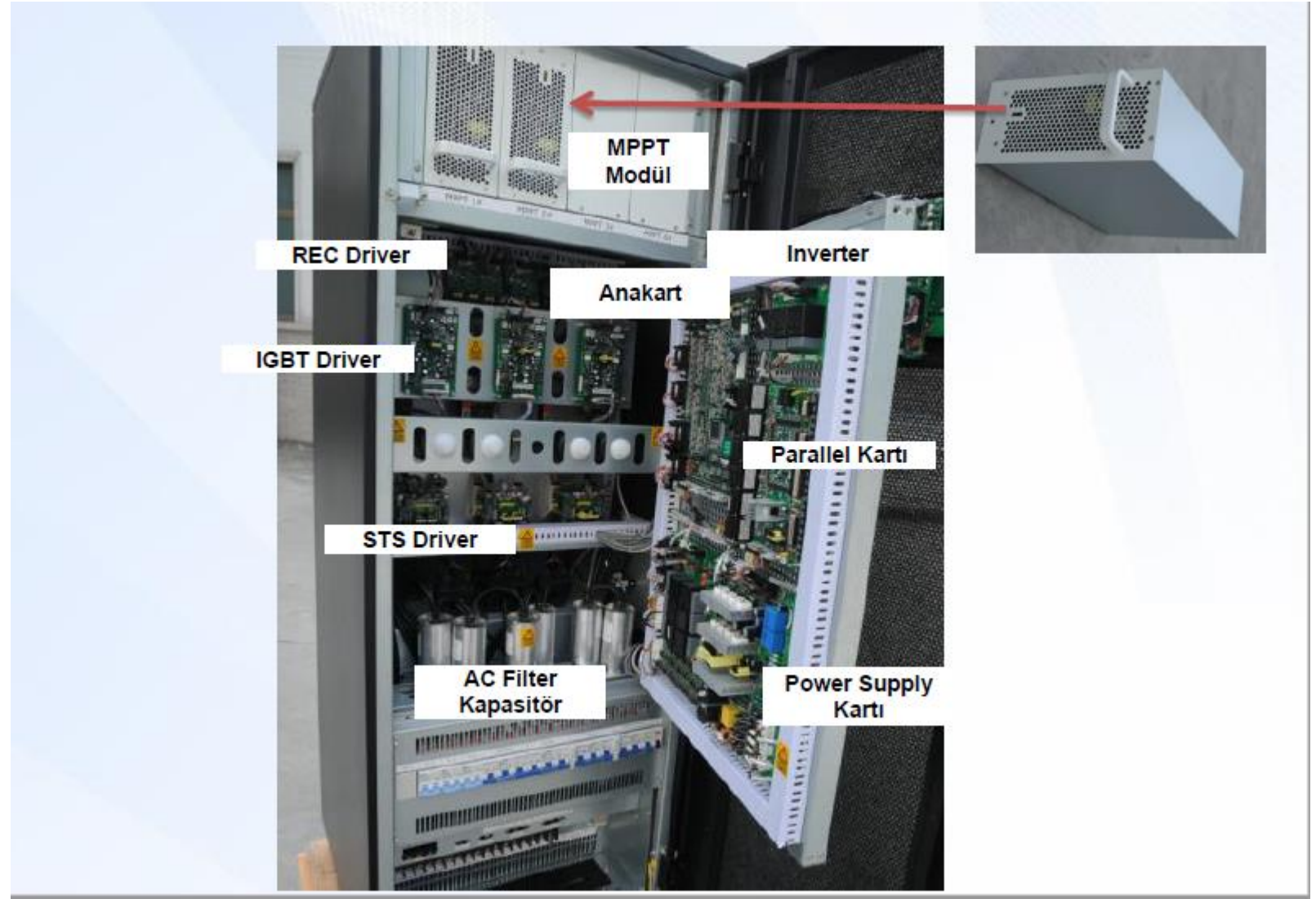
Example charging time and distance:

- Renault ZOE (41kWh)
- 75% charge 45 minutes
- 100% charge 1.5 hours ~ 400km



# POWER DC CHARGER

## Product Inboard Design



## POWER AC CHARGERS(3.7,7.4,11,22 KW)



1 Phase,PWR11 HOME-EVS-3,7 kW WALLBOX



3 Phase,WR33 COMMERCIAL DUO -EVS-2x11 kW



3 Phase,PWR33 HOME -EVC-22 kW WALLBOX



3 Phase,PWR33 COMMERCIAL DUO -EVC-2x22 kW



1 Phase,PWR11 BUSINESS-EVS-7,4 kW WALLBOX



3 Phase,PWR33 BUSINESS -EVC-22 kW WALLBOX

## POWER DC CHARGERS(30,60,120,300 KW)



PWR33 COMMERCIAL EV CHARGER  
30kW DC +22kW AC



PWR33 COMMERCIAL EV POWER CHARGER  
300kW DC + 22kW AC



13 Haziran 2022 006241

## YERLİ MALİ BELGESİ



Belgenin Veriliş Tarihi : 13.06.2022 Belgenin Geçerlilik Tarihi : 13.06.2023 Belge No : 2022108396561  
Üretici Ünvanı: POWER ELEKTRONİK SANAYİ VE TİCARET ANONİM ŞİRKETİ

İşyeri Adresi: Armağanevler Mahallesi Samanyolu Caddesi İpekçi Sokak No:12 (Power Plaza)  
ÜMRANIYE/İSTANBUL

Üreticinin Vergi Kimlik No: 7320739691 TC Kimlik No: MERSİS No : 0732051525900010

Telefon: 216-4816699 E-posta: info@powerelektronik.com.tr  
Faks: 216-4816609 Web Adresi: www.powerelektronik.com.tr

Ticaret Sicil No: 522151 Üye Sicil No: 36075

Ürün Adı: Batarya şarj cihazı (Araç için, 1-500kW)

Ürün Kodu (PRODCOM/GTİP): 27.11.50.33.00 /

Teknik Özellikleri(Marka Adı, Modeli, Seri Numarası, Cinsi):

MARKA: POWER

Not: İşbu Yerli Mali Belgesi yukarıda tanımlı verilen ürünlerden BATARYA ŞARJ CİHAZI (DC ARAÇ ŞARJ 60-300 kW) için düzenlenmiştir.

Kapasite Raporunun Tarih :01.02.2021 No : 3753 Geçerlilik Süresi :01.02.2023

Sanayi Sicil Belgesinin Tarih : 05.03.2015 No : 667316

Yerli Katkı Oranı : % 72,43

Ürünün Teknolojik Düzeyi (düşük/orta-düşük/orta-yüksek/yüksek)(Eurostat) : orta-yüksek

Diğer bilgi ve belgeler :

İşbu belge Bilim, Sanayi ve Teknoloji Bakanlığı'nın 13/09/2014 tarih ve 29118 sayılı Resmi Gazetede yayımlanan "Yerli Mali Tebliği (SGM 2014/35)"ne istinaden ve TOBB tarafından hazırlanan "Yerli Mali Belgesinin Düzenlenmesi Uygulama Esaslarına" göre 13.06.2022 tarihinde düzenlenmiştir. Belgenin geçerlilik süresi veriliş tarihinden itibaren bir yıl geçerlidir.

Düzenleyen Oda/Borsa  
İSTANBUL SANAYİ ODASI

Onaylayan  
Mehmet ÇAVDAR  
Şube Müdürü



10 Mart 2022 002474

## YERLİ MALİ BELGESİ



Belgenin Veriliş Tarihi : 01.03.2022 Belgenin Geçerlilik Tarihi : 01.03.2023 Belge No : 2022108392077  
Üretici Ünvanı: POWER ELEKTRONİK SANAYİ VE TİCARET ANONİM ŞİRKETİ

İşyeri Adresi: Armağanevler Mahallesi Samanyolu Caddesi İpekçi Sokak No:12 (Power Plaza)  
ÜMRANIYE/İSTANBUL

Üreticinin Vergi Kimlik No: 7320739691 TC Kimlik No: MERSİS No : 0732051525900010

Telefon: 216-4816699 E-posta: info@powerelektronik.com.tr  
Faks: 216-4816609 Web Adresi: www.powerelektronik.com.tr

Ticaret Sicil No: 522151 Üye Sicil No: 36075

Ürün Adı: Batarya şarj cihazı (Araç için, 1-500kW)

Ürün Kodu (PRODCOM/GTİP): 27.11.50.33.00 /

Teknik Özellikleri(Marka Adı, Modeli, Seri Numarası, Cinsi):

İşbu Yerli Mali Belgesi "Batarya Şarj Cihazı (Araç için 22kW) düzenlenmiştir. Marka Adı: POWER

Kapasite Raporunun Tarih :01.02.2021 No : 3753 Geçerlilik Süresi :01.02.2023

Sanayi Sicil Belgesinin Tarih : 05.03.2015 No : 667316

Yerli Katkı Oranı : % 69,12

Ürünün Teknolojik Düzeyi (düşük/orta-düşük/orta-yüksek/yüksek)(Eurostat) : orta-yüksek

Diğer bilgi ve belgeler :

İşbu belge Bilim, Sanayi ve Teknoloji Bakanlığı'nın 13/09/2014 tarih ve 29118 sayılı Resmi Gazetede yayımlanan "Yerli Mali Tebliği (SGM 2014/35)"ne istinaden ve TOBB tarafından hazırlanan "Yerli Mali Belgesinin Düzenlenmesi Uygulama Esaslarına" göre 01.03.2022 tarihinde düzenlenmiştir. Belgenin geçerlilik süresi veriliş tarihinden itibaren bir yıl geçerlidir.

Düzenleyen Oda/Borsa  
İSTANBUL SANAYİ ODASI

Onaylayan  
Mehmet ÇAVDAR





## ATTESTATION OF CONFORMITY

Issued to: Power Elektronik San. ve Tic. A.Ş.  
Armağanevler Mah. İpekkı Sok. No:12 Power Plaza Ümraniye/İstanbul, Turkey  
34770

For the product: Electric Vehicle Charger

Trade name: POWER ELEKTRONİK

Type/Model: PWR-EFINDUK-60-300KW

Ratings: AC 400V±10%, 3P+N+PE, 50/60Hz

Manufactured by: Power Elektronik San. ve Tic. A.Ş.  
Armağanevler Mah. İpekkı Sok. No:12 Power Plaza Ümraniye/İstanbul, Turkey  
34770

Requirements: IEC 61851-21-2:2018  
EN IEC 61851-21-2:2021

This Attestation is granted on account of an examination by DEKRA, the results of which are laid down in a confidential file no. 6131556.50

This Attestation implies that the examined types are in accordance with the standards designated under the Electromagnetic compatibility directive 2014/30/EU.

The examination has been carried out on one single specimen or several specimens of the product, submitted by the manufacturer. The Attestation does not include an assessment of the manufacturer's production. Conformity of his production with the specimen tested by DEKRA is not the responsibility of DEKRA.

The CE marking may be affixed on the product if all relevant and effective EC directives are complied with.

Amhem, 28 July 2022 Number: 6131556.01AOC

DEKRA Testing and Certification (Shanghai) Ltd.

Kerry Lin  
Certification Manager

Integral publication of this attestation and adjoining reports is allowed



Produkte  
Products

Report No.: Attachment 1 for 6131208.50

### Constructional Data Form (CDF) for Electrical Appliances

Page 1 of 11

License Holder/Manufacturer (Name and Address)	Power Elektronik San. ve Tic. A.Ş. Armağanevler Mah. İpekkı Sok. No:12 Power Plaza Ümraniye/İstanbul, Turkey 34770
Factory(ies) (Name and Address)	Power Elektronik San. ve Tic. A.Ş. Armağanevler Mah. İpekkı Sok. No:12 Power Plaza Ümraniye/İstanbul, Turkey 34770
Type of Appliance	Electric Vehicle Charger
Brand Name/Trademark	POWER ELEKTRONİK
Type Designation	PWR-EFINDUK-60-300KW
Rating	Input: AC 400V±10%, 3P+N+PE, 50/60Hz, Max. 275A Output: AC Charging: AC 400V, 32A, Max. 22kW, 3P+N+PE, 50/60Hz DC Single charging: CCS: 150KW / 200V~1000V DC / 0~200A CHADEMO: 60KW / 200V~500V DC / 0~125A DC Simultaneous charging: CCS: 90KW / 200V~1000V DC / 0~200A CHADEMO: 60KW / 200V~500V DC / 0~125A IP54, -30 °C ~ +55 °C
Class of equipment	Class I
Class of IP	IP54
Supply connection	Permanently
Equipment mobility	Stationary
Operation ambient	-30 to +55°C
Operation altitude	2000m
Operation condition	Full load
Additional information	-

## ATTESTATION OF CONFORMITY

Issued to: Power Elektronik San. ve Tic. A.Ş.  
Armağanevler Mah. İpekkı Sok. No:12 Power Plaza Ümraniye/İstanbul, Turkey  
34770

For the product: Electric Vehicle Charger

Trade name: POWER ELEKTRONİK

Type/Model: PWR-EFINDUK-60-300KW

Ratings: Input: AC 400V±10%, 3P+N+PE, 50/60Hz, Max. 275A  
Output:  
AC Charging: AC 400V, 32A, Max. 22kW, 3P+N+PE, 50/60Hz  
DC Single charging:  
CCS: 150KW / 200V~1000V DC / 0~200A  
CHADEMO: 60KW / 200V~500V DC / 0~125A  
DC Simultaneous charging:  
CCS: 90KW / 200V~1000V DC / 0~200A  
CHADEMO: 60KW / 200V~500V DC / 0~125A  
IP54, -30 °C ~ +55 °C

Manufactured by: Power Elektronik San. ve Tic. A.Ş.  
Armağanevler Mah. İpekkı Sok. No:12 Power Plaza Ümraniye/İstanbul, Turkey  
34770

Requirements: EN 61851-23:2014+EN 61851-23:2014/AC:2016-08;  
EN 61851-1:2011  
EN IEC 61851-1:2019

This Attestation is granted on account of an examination by DEKRA, the results of which are laid down in a confidential file no. 6131208.50 and 6131208.51

This Attestation implies that the examined types are in accordance with the standards designated under the Low Voltage Directive (LVD) 2014/35/EU

The examination has been carried out on one single specimen or several specimens of the product, submitted by the manufacturer. The Attestation does not include an assessment of the manufacturer's production. Conformity of his production with the specimen tested by DEKRA is not the responsibility of DEKRA.

The CE marking may be affixed on the product if all relevant and effective EC directives are complied with. Amhem, 4 August 2022 Number: 6131208.01AOC

DEKRA Testing and Certification (Shanghai) Ltd.

Kate Xu  
Certification Manager

Integral publication of this attestation and adjoining reports is allowed



# ENERGY STORAGE SYSTEMS

Why we need to storage energy ?

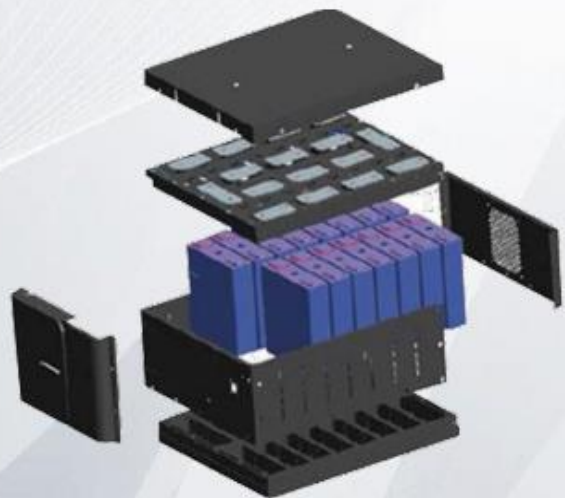


Energy  
Storage  
Systems(ESS)

# ESS SOLUTION LI-ION BATTERY

➤ Modular ESS Units

3.2V x 15ah = 1.92kWh



➤ 1.92 kWh Modules



➤ 2 x 1.92 = 3.84 kWh Modules



➤ 3 x 1.92 = 5.76 kWh Modules





#### GRES-75-50

Battery capacity: **75kWh**  
 PCS capacity: **50kW**  
 Dimension: **1680\*1500\*1700** (W\*D\*H)mm

#### GRES-150-100

Battery capacity: **150kWh**  
 PCS capacity: **100kW**  
 Dimension: **1680\*2270\*1700** (W\*D\*H)mm



#### GRES-225-150

Battery capacity: **225kWh**  
 PCS capacity: **150kW**  
 Dimension: **1680\*3050\*1700**(W\*D\*H)mm

#### GRES-300-200

Battery capacity: **300kWh**  
 PCS capacity: **200kW**  
 Dimension: **1680\*3830\*1700**(W\*D\*H) mm

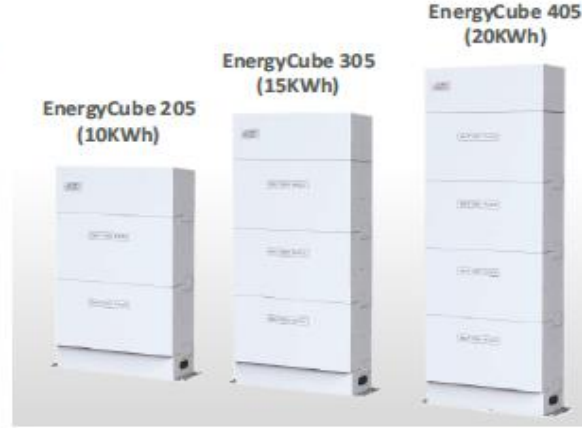


Model	GRES-75-50	GRES-150-100	GRES-225-150	GRES-300-200
<b>AC parameters (grid connected)</b>				
Rated output power (kW)	50	100	150	200
Max output power (kW)	55	110	165	220
Rated grid voltage (V)	3W+N+PE, 380			
Grid voltage range	±15%			
Rated grid frequency (Hz)	50/60			
Grid frequency range (Hz)	±2			
Current waveform distortion rate	<3%(Rated voltage)			
DC component	<0.5%in			
Power factor	>0.99(Rated voltage)			
Power factor adjustable range	1(lead) ~ 1(lag)			
Overload capacity	105% Long term			
<b>AC parameters (off grid)</b>				
Rated output power (kW)	50	100	150	200
Max output power (kW)	55	110	165	220
Rated grid voltage (V)	3W+N+PE, 380			
Current waveform distortion rate	<3%(Linear Load)			
Rated frequency(Hz)	50/60			
Overload capacity	105% Long term			
<b>Battery</b>				
Battery type	Lithium Iron phosphate			
Energy of each module(kWh)	5.12			
Module qty	15	30	45	60
Total power (kWh)	76.8	153.6	230.4	307.2
Running Time (h)	1.5(Optional by Changing module qty)			
Cyclelife	25°C 0.5C/0.5C 100%DOD EOL80% ≥4000 cycles			
<b>System efficiency</b>				
Max efficiency	95%			
<b>Protection</b>				
DC switch	YES			
AC switch	YES			
Grid monitoring	YES			
Surge protection	DC/AC 2nd level			
<b>Basic Parameters</b>				
Dimension(W*D*H)(mm)	1680*1500*1700	1680*2270*1700	1680*3050*1700	1680*3830*1700
Weight (kg)	1395	2470	3545	4620
Isolated transformer	NO			
On/off grid switching	STS			
Protection	Outdoor IP54			
Working temperature	-20 ~ 55°C (>45°C derating)			
Relative humidity	0 ~ 95% ( no condensing)			
Cooling	Intelligent air cooling (Intelligent heating optional )			
Max working altitude(m)	4000<-2000 derating)			
Display	Touch screen			
Communication	RS485、CAN、LAN			
Communication Protocol	Modbus-RTU, Modbus-TCP, CAN2.0B			
Certification	IEC62477-1/EN61000/IEC62519/IEC62620/UN38.3			

## ESS STORAGE



## HOME ESS



## BATTERIES



# EV CHARGING SOLUTIONS

- Home & Smart & Public
- Charging Management System
- AC And DC Fast Charge
- Renewable Energy Systems
- Technical Services



# EXAMPLE EVC/SOLAR APPLICATIONS



**POWER**  
**ENGINEERING**  
*Successful Project Management*



**POWER SOLAR**<sup>®</sup>

**POWER**<sup>®</sup>  
**ELEKTRONIK**  
Endüstriyel Güç Sistemleri  
Industrial Power Solutions

# EXAMPLE EVC/SOLAR APPLICATIONS





# EXAMPLE EVC/SOLAR APPLICATIONS



**POWER**  
ENGINEERING  
*Successful Project Management*



**POWER SOLAR**<sup>®</sup>

**POWER**  
ELEKTRONIK  
Endüstriyel Güç Sistemleri  
Industrial Power Solutions

# EXAMPLE EVC/SOLAR APPLICATIONS



# EXAMPLE EVC/SOLAR APPLICATIONS



# EXAMPLE SOLAR APPLICATIONS



**POWER**  
ENGINEERING  
*Successful Project Management*



**POWER SOLAR**<sup>®</sup>

**POWER**  
ELEKTRONİK  
Endüstriyel Güç Sistemleri  
Industrial Power Solutions

# EXAMPLE EVC/SOLAR APPLICATIONS



# EXAMPLE EVC/SOLAR APPLICATIONS



# EXAMPLE APPLICATIONS



# POWER SOLAR ENERGY COMPLETED PROJECTS

<b>Project Name</b>	<b>Adiyaman DSI 2.2 MWp Solar Energy Project</b>
<b>Installed Power</b>	2.200 kWp
<b>Solar Panels</b>	8.800 Pcs 250Wp Polycrystalline PV
<b>Inverters</b>	100Pcs 20kWe SMA String inverter
<b>Location</b>	Turkey/ Adiyaman City





# POWER SOLAR ENERGY COMPLETED PROJECTS

Project Name

Kahramanmaraş 2 MWp Roof top Solar Project



# POWER SOLAR ENERGY COMPLETED PROJECTS

<b>Project Name</b>	<b>Alanya Solar Project</b>
<b>Installed Power</b>	3.200 kWp
<b>Solar Panels</b>	11540 Pcs 265Wp Polycrystalline PV
<b>Inverters</b>	174 Pcs 25kWe SCHNEIDER String inverter
<b>Location</b>	Turkey/ Antalya city /Alanya



# POWER SOLAR ENERGY COMPLETED PROJECTS

Project Name

Fina Enerji 10,7 MWp Solar Project







**20. BÖLGE DSİ 2.2MWp /ADIYAMAN/2016**



**ALANYA GES /3.3MWp /ANTALYA/2017**



**GÜVEN VE MUDO GES  
2.2MWp /KAHRAMANMARAŞ/2017**



**CEVZİLİBAĞ HOTEL  
1.8MWp /BİTLİS ADİLCEZAV/2017**



**İSKİ /2.7 MWp /İSTANBUL/2019**



**TROPICANA HOTEL /42kWp /MUĞLA/2019**



**ADİLCEVAZ MUN /500kWp /BİTLİS/2013**



**30 MWp /NETHERLAND /2020**



**NUH PANEL /0,2 MWp /GEBZE/2016**



**THE EMBASSY OF SOUTH SUDAN  
50kWp /GÜNEY SUDAN-JUBA/2018**



**AMASYA UNIVERSITY /200kWp  
AMASYA /2016**



**İPRAGAZ /20kWp 80 ADET /İZMİT /2018**

# TOTAL COMPLETED SOLAR ENERGY PROJECT CAPACITIES

- Off Grid solar power projects
  - Totally 400 kWp
- On-Grid solar power projects
  - Totally 1.200 kWp Roof installation
  - Totally 6 MWp field installation
- Solar Lighting projects
  - 450 pole



Ar-Ge  
Merkezi



TEKNOLOJİYE YATIRIM GELECEĞE YATIRIM

Tasarım  
Merkezi



K T R O N I  
S O L A R



01

Human  
Resours

02  
R & D Central

03

Sertifications

04

AFTER SALES  
TECHNICAL  
SUPPORT

Thanks to our qualified R&D department, we  
make completely new designs.

Power Elektronik continues its activities by  
observing customer satisfaction.

- 24/7 Service support
- Competent Technical Services
- maintenance service
- satisfaction measurement

# STRONG SIDES OF POWER ELEKRONIK

1

Efficient Customer Service

3

ManPower Presence  
Project Design  
Site Installation  
Commissioning

2

Industrial & Innovative Solutions

# STRONG SIDES OF POWER ELEKRONIK

4

Long Relationships

6

Engineering Approaching

5

Product = Solution  
Sale = Cooperation





- ISO 9001, ISO 45001, ISO 14001, ISO 27001
- TSE and EN Documents
- Service Qualifications Documents
- Product final quality and Routine tests
- Factory and field acceptance tests



Thanks to our qualified R&D department, we make completely new designs.

Power Elektronik continues its activities by observing customer satisfaction.

- 24/7 Service support
- Competent Technical Services
- maintenance service
- satisfaction measurement

# REFERENCES



stamp

**TÜRKİYE:** Armağanevler Mh. Diriliş Cd. İpekçi Sk. No:12 Ümraniye / ISTANBUL

**NETHERLAND:** Ground, 1st , 2nd and 3rd floor, Joop Geesinkweg 901, Amsterdam-Duivendrecht, 1114 AB,  
Netherlands Phone +31 6 27107194 [www.powersolarenergy.com.tr](http://www.powersolarenergy.com.tr) E-Mail: [info@powersolarenergy.nl](mailto:info@powersolarenergy.nl)

+90 216 481 66 99 +90 216 481 66 09 [info@powerelektronik.com.tr](mailto:info@powerelektronik.com.tr)

[www.powerelektronik.com.tr](http://www.powerelektronik.com.tr) [www.powersolar.com.tr](http://www.powersolar.com.tr)

*Thank you for your attention.*

*We would like to cooperate and support your energy project.*

**Dr.Mehmet ÇELİKAY**

**EVC Business Development Manager**

**GSM:+90 533 2080388**

**Email: mehmet.celikyay@powerelektronik.com.tr**



**POWER ELEKTRONİK SAN. VE TİC. A.Ş.**  
**POWER SOLAR ENERJİ ELEKTRONİK ÜRETİM A.Ş.**  
**POWER MÜHENDİSLİK PROJE ELEKTRİK ELEKTRONİK İNŞ.**  
**SAN. VE TİC. A.Ş.**

Armaganevler Mahallesi , Diriliş Cad. İpekci Sok No:12  
Ümraniye / İstanbul / TÜRKİYE  
Tel: +90 216 481 66 99 Fax:+90 216 481 66 09

[www.powerelektronik.com.tr](http://www.powerelektronik.com.tr)  
[www.powermuhendislik.com.tr](http://www.powermuhendislik.com.tr)  
[www.powersolar.com.tr](http://www.powersolar.com.tr)  
[info@powerelektronik.com.tr](mailto:info@powerelektronik.com.tr)

**POWER**  
ELEKTRONİK  
Endüstriyel Güç Sistemleri  
Industrial Power Solutions

**POWER**SOLAR®  
www.powersolar.com.tr

**POWER**  
ENGINEERING  
Successful Project Management